

Your Source For Functional, Proven, Genetically Designed Females



BMS
+\$18
CEZ\$
+\$10
BIS
+\$17
CHBS
+\$32

GRNDVW CMR I56T BETH Y505 ET (43214921) DEJYEJEF

CE	BW	WW	YW	Milk	M&G	MCE	UDDR	TEAT	SC	CW	FAT	REA	MARB
-3.3	+4.4	+60	+85	+32	+62	-3.7	+1.30	+1.23	+1.0	+68	+0.016	+0.92	+0.24

DOB **04/06/2011**

SIRE **CMR GVP MR MATERNAL 156T** • DAM **DJB 46B BETH 1L**

- ★ Selling the Right to Flush.
- ★ Heifer calf sired by Whitehawk Precedence 342Z also sells.



BMS
+\$32
CEZ\$
+\$20
BIS
+\$27
CHBS
+\$40

WHITEHAWK 342 BEEFMAID 348Z (43327901) DEJYEJEF

CE	BW	WW	YW	Milk	M&G	MCE	UDDR	TEAT	SC	CW	FAT	REA	MARB
+3.5	+3.0	+64	+115	+28	+61	+3.3	+1.48	+1.31	+2.0	+81	-0.010	+0.44	+0.39

DOB **09/15/2012**

SIRE **KCF BENNETT M326 S342** • DAM **WHITEHAWK 2328 BEEFMAID 142XET**

- ★ Donor. Selling 1/2 interest with the option to double and own all of 348Z.
- ★ Bull calf sired by Whitehawk Paramount 372Z also sells.
- ★ Dam of Lot 1, pictured on opposite page.



BMS
+\$21
CEZ\$
+\$17
BIS
+\$20
CHBS
+\$24

GRANDVIEW CMR 430 MS BETH Y522 (43207527)

CE	BW	WW	YW	Milk	M&G	MCE	UDDR	TEAT	SC	CW	FAT	REA	MARB
+2.3	+1.6	+47	+66	+27	+51	-0.6	+1.21	+1.18	+1.1	+54	+0.020	+0.57	+0.20

DOB **04/16/2011**

SIRE **CMR TF 242 GARRETT 430** • DAM **DJB 46B BETH 1L**

- ★ Selling 3 direct daughters of breed legend DJB 46B Beth 1L.
- ★ Heifer calf sired by Whitehawk 1016 Beefmkr 438A ET also sells.
- ★ Bred AI to KCF Bennett Addition B262.



BMS
+\$26
CEZ\$
+\$21
BIS
+\$20
CHBS
+\$35

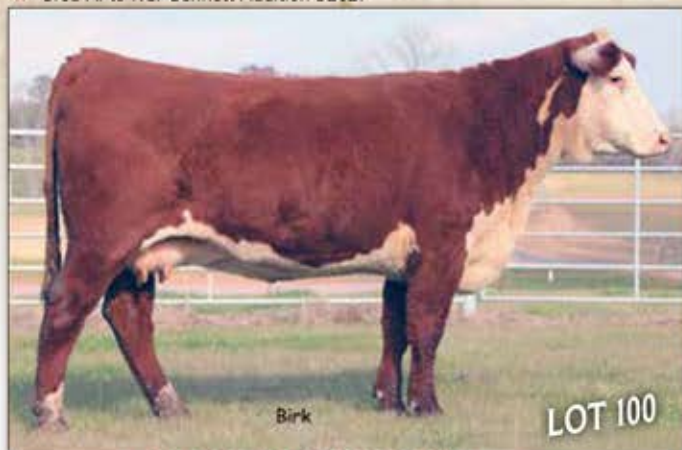
KCF MISS REVOLUTION Z298 ET (43387246)

CE	BW	WW	YW	Milk	M&G	MCE	UDDR	TEAT	SC	CW	FAT	REA	MARB
+5.7	+1.2	+65	+101	+21	+54	+4.2	+1.50	+1.54	+1.2	+77	+0.029	+1.01	+0.14

DOB **09/18/2012**

SIRE **MSU TCF REVOLUTION 4R** • DAM **KCF MISS PROFICIENT U201**

- ★ Donor. Selling 1/2 interest with the option to double and own all of Z298.
- ★ Bull calf sired by Whitehawk Mr Beefmaker 508A also sells.
- ★ Full sister to KCF Bennett Revolution X51.



BMS
+\$14
CEZ\$
+\$12
BIS
+\$13
CHBS
+\$24

GV CMR 60S MS 918X Z241 (43299784)

CE	BW	WW	YW	Milk	M&G	MCE	UDDR	TEAT	SC	CW	FAT	REA	MARB
-0.7	+5.1	+52	+87	+27	+53	-2.4	+1.36	+1.48	+0.9	+66	-0.008	+0.37	-0.01

DOB **02/08/2012**

SIRE **GRANDVIEW CMR HAWK L1 ADV 918X** • DAM **CMR GRANDVIEW MISS 1236 60S**

- ★ Bull calf sired by Whitehawk 1016 Beefmkr 438A ET also sells.
- ★ Bred AI to RMB 918 Whitlock 592A, Lot 62, pictured on opposite page.



BMS
+\$28
CEZ\$
+\$18
BIS
+\$24
CHBS
+\$35

SHOPE BEEFMAIDEN 937X/968 I01 (43320835)

CE	BW	WW	YW	Milk	M&G	MCE	UDDR	TEAT	SC	CW	FAT	REA	MARB
+2.4	+3.7	+61	+104	+26	+56	+1.7	+1.67	+1.67	+1.7	+71	+0.026	+0.16	+0.41

DOB **10/06/2012**

SIRE **WHITEHAWK BEEFMAKER 937X ET** • DAM **WALKER FJB MISS 1030 779 968**

- ★ Donor. Selling choice between 101 or her heifer calf sired by Whitehawk 4R Revolution 2328. 2328 is the No. 1 Bull in the breed for the new Carcass Weight EPD trait @ +100.